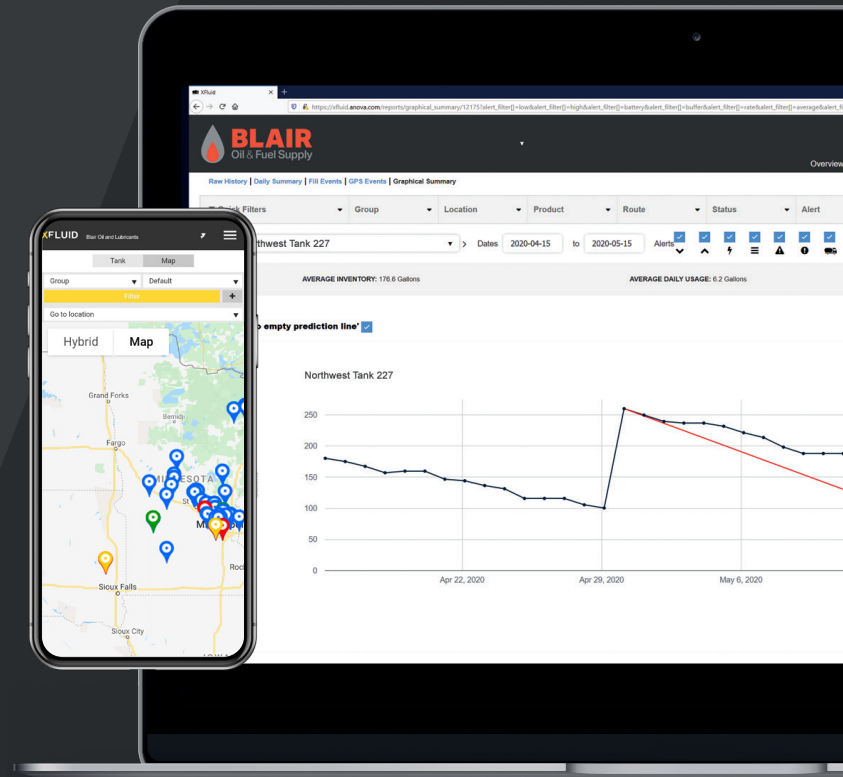


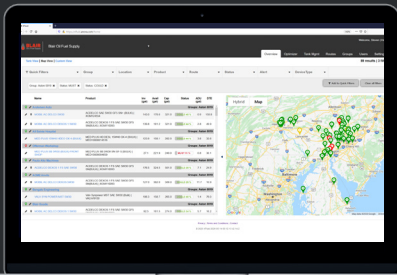
XFLUID

This actionable software enables suppliers to optimize deliveries with industry-leading forecasting tools. The easy-to-use, web-based software enables monitoring data to be viewed and sorted in several ways, from high-level overviews or by drilling down to detailed, individual monitor information.

- Pre-built standard reports
- Quick filters and ad-hoc filtering and sorting for fast, flexible access to information
- Customizable views of field-level data
- Export to XLS/CSV for complex data reports
- Advanced alert and notification options
- Integrate your back-office software with xFluid APIs for automated delivery reports
- Integrated mobile app available for monitor installation and calibration (see next page)

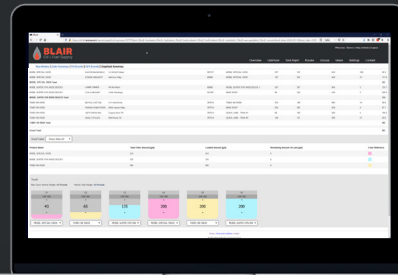


FEATURES



Overview

- View all information at a glance
- Use quick filters to view and sort the information relevant to your needs
- Map critical deliveries



Optimizer

- Load planning and location delivery planning tool
- Sort to target tanks and automatically determine truck loads
- Determine which product and how much inventory to deliver to reach target efficiencies



Efficiency Review

- Periodic business review with your Anova support team
- Set milestones and discuss Key Performance Indicators (KPIs) and Return on Investment (ROI)
- Future development and operational efficiency idea generation

xFluid Installation Automation App

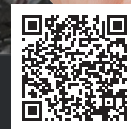
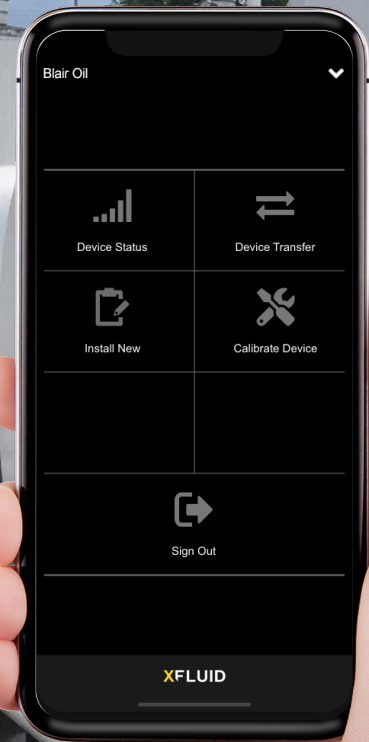
XFLUID Installation Automation App

AUTOMATED INSTALLATION AND DEVICE SET-UP

No need to call into support, enables self-service. The app dramatically reduces time spent at the tank site, while making the install procedure easy and more accurate.

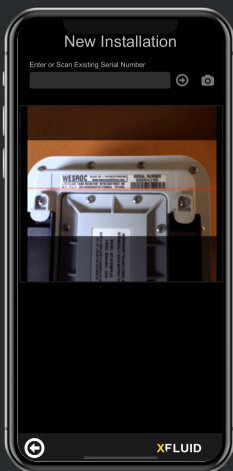
The new xFluid Install Mobile App walks the user through five easy steps that capture critical data more reliably:

- Scan device information versus typing in by hand
- Capture owner and location information using the phone GPS
- Select product and inventory type from easy menus
- Simplify tank geometry measurements using tank shape options



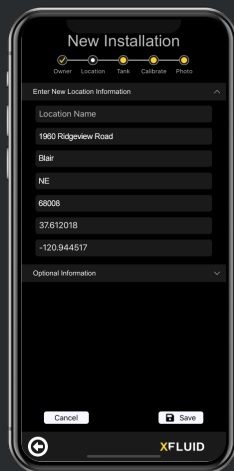
FIVE EASY STEPS

1



Scan the device's bar code using phone camera.

2



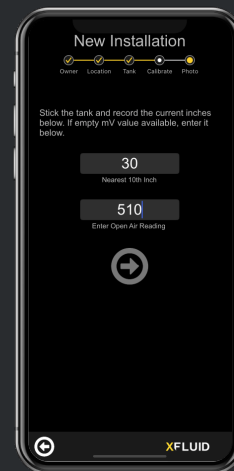
Select from existing nearby locations, or create a new location.

3



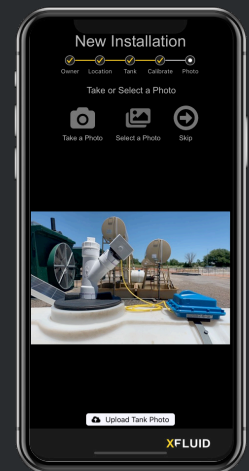
Create strapping chart, select product, and name tank.

4



Calibrate as part of install process or recalibrate an existing tank.

5



Attach a photo to document the location's installation details for future use.

Customer Support: 855.434.2677 • xfluidsupport@anova.com

CONNECTING THE INDUSTRIAL WORLD - FOR BETTER

anova.com